



9 Albert Embankment, London
SE1

GARTON JONES.COM

9 Albert Embankment, London , SE1

£680 Per Week

A 2-bedroom apartment offering 839sq.ft (78sq.m) available to rent on the 9th floor of 9 Albert Embankment, a popular residential development located on the Southbank of the River Thames conveniently between Lambeth & Vauxhall Bridges. This bright and spacious apartment benefits from an open plan reception with a modern integrated kitchen, two bathrooms (1 en-suite), good storage throughout and a balcony offering unobstructed views of the London skyline.

9 Albert Embankment is a secure development with a 24-hour concierge and on-site convenience store located just moments from London's trendy South Bank and a great selection of shops, bars, and restaurants. Transport links are excellent with Vauxhall Rail, Tube and Bus services within a few minutes' walk. There is also a taxi rank at the neighbouring River Park Plaza Hotel and a River Taxi Pier at St George Wharf, also within easy reach.

Please note furniture may differ to that shown in the current photos.

- Electricity Supply — Mains | Water Supply — Mains (included in the rent) | Sewerage — Mains | Heating — Electric Radiators
- Broadband & Mobile Signal : Check Coverage via Ofcom
- Parking: No Parking Included
- Lift Access
- Building Safety: EWS1 Available on Request
- Council Tax Band F (London Borough of Lambeth)
- 5 Week Security Deposit
- Holding deposit equivalent to 1 week of rent
- Rent to be payable monthly in advance
- EPC Rating C (80)

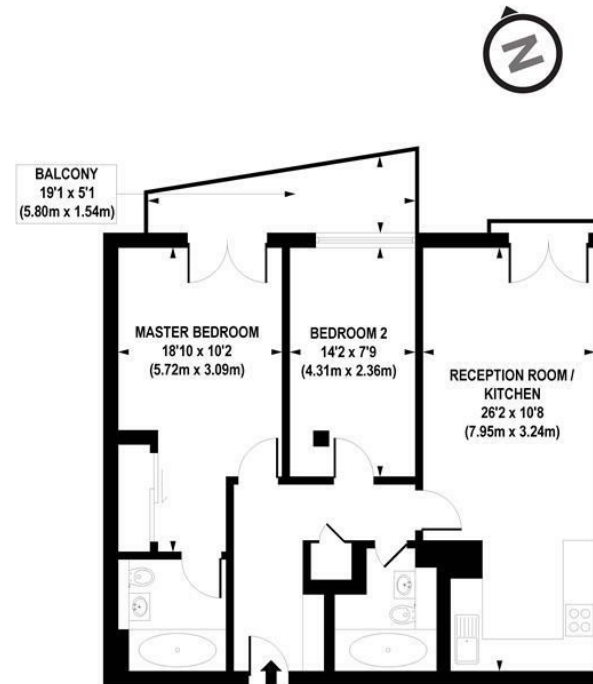
- 2 Bedrooms
- 839sq.ft (78sq.m)
- 2 Bathrooms (1 En-Suite)
- Open Plan Reception Room
- Modern Fitted Kitchen
- Balcony
- Views of City of London
- 24 Hour Porter
- On-Site Convenience Store
- 0.5 Miles to Vauxhall Station

GARTON JONES.COM

9 Albert
Embankment
London
SE1 7SP

Lettings:
+44 (0) 20 7735 1888
nineelms@gartonjones.com
www.gartonjones.com





APPROX. GROSS INTERNAL FLOOR AREA 771 sq. ft / 71.61 sq. m

Floorplan is for illustrative purposes only and is not to scale.
Every attempt has been made to ensure the accuracy of the floorplan shown, however all measurements, fixtures, fittings and data shown are an approximate interpretation for illustrative purposes only.
Liability for errors, omissions or mis-statement through negligence or otherwise is hereby excluded.

CP CREATIVE
PROPERTY MARKETING

